

HYBRID FLOORING

ANGLE / ANGLE CLICK Floating Installation Guidelines

This document covers products **ASPIRE, EASI-PLANK & ICONIC Hybrid Flooring**, these ranges feature an **Angle / Angle click together profile** for floating installation. As with all flooring products careful attention to the installation, basic floor care and maintenance guidelines need to be understood and followed to maximise the performance benefits of the product. **An expanded floor care document is available on our website for easy reading or downloading.**

Please read the following instructions thoroughly before installing the floor.

Important note: Hybrid flooring is considered waterproof for indoor use only, it should not be installed in pool areas, saunas, conservatories, or exposed sunrooms where heat and high UV exposure may reach extremes. Each project should be installed by a professional flooring contractor or skilled tradesperson. The installation process and method selected is the responsibility of the contractor. You must be satisfied that the contractor is qualified to conduct your site installation. If you have concerns regarding the install, please contact your reseller.

The installation should be conducted with care, please avoid any overuse of tapping blocks or mallet hammering to the end joint locking system: excessive handling will cause damage & micro-fractures to the end joint locking system; this will not be covered by warranty. Hybrid plank installations require more sensitive tapping around the end joints compared to Laminate products and should be treated with due care when the locking system is being engaged.

- **Please note:** Our Hybrid flooring products are suitable for installation with **Hydronic In-Slab under-floor heating systems**; it must be installed and operated as per the heating system manufacturer's installation and operating guidelines. **No other floor heating system or method will be covered by our warranty. Hydronic 'In-Screed' heating is not covered by our warranty.** Above floor heating & cooling systems require strict attention to operating guidelines when used with Hybrid Flooring. **Proximity to heat exposure from open fires or enclosed heating units may result in plank deformity and unrepairable damage, this will not be covered by our warranty.**

Steam mopping should not be used under any circumstances. Sweeping and a damp mop for general cleaning is ok.

FLOATING INSTALLATION ANGLE / ANGLE CLICK LOCKING PROFILE

These installation guidelines apply to the **Click Angle / Angle Click Locking profile**. **Maximum Raft Size for each product noted below.**

ICONIC WPC installation, 10m, length & 10m, width. ASPIRE & EASI-PLANK installation, 15m, length & 15m, width.

- **At site, please store the product in original cartons placed on a flat, dry area away from any extreme temperatures or moisture.**
- Avoid direct exposure to sunlight and heat for prolonged periods, possible discoloration & deformity may occur. During peak sunlight hours you must use sun blinds, tinting or similar window & door protection, this will minimise the UV bleaching & heat damage that can occur if left unprotected.
- Regardless of new construction or renovation projects, keep flooring stored in rooms that are not being worked in and only install product after other trades have completed work, this will help avoid site related damage and painting residues on the floor surface.
- To minimise shade / batch variation, mix and install planks from several cartons during the entire install process.
- **Inspect all planks for damage before installing. If you have any concerns about the product fit or finish, please contact your reseller immediately. DO NOT INSTALL DEFECTIVE PLANKS.** Claims will not be accepted for flooring that has been cut to size and or installed.
- All subfloor patching/levelling must be dry completely prior to installation, refer compound manufacturers guidelines.
- **Stair nosing must be direct fixed using a silicone based flexible adhesive.**
- **For warranty, floating method only on a sound flat & dry substrate, raft size & install requirements must be followed.**

www.preferencefloors.com.au

Adelaide (SA)

t +61 8 8262 2774
sa@preferencefloors.com.au

Brisbane (QLD)

t +61 7 3875 1688
qld@preferencefloors.com.au

Melbourne (VIC)

t +61 3 9794 5111
vic@preferencefloors.com.au

Perth (WA)

t +61 8 9471 7785
wa@preferencefloors.com.au

Sydney (NSW)

t +61 2 9738 1188
sales@preferencefloors.com.au

HYBRID FLOORING

INSTALLATION CONTINUED

Tools required: Tape Measure, Guillotine or Jigsaw or fine-tooth Power Saw, Utility Knife, Straight Edge, Tapping Block, Rubber Mallet, Pull Bar, 8-10mm Spacers, T-Square, Safety Glasses, N95 Dust Mask, Broom / Vacuum and a Pressure or Weighted Roller to smooth edge joins if necessary. Some odours may be present when cartons are initially opened, **please install in a well-ventilated area & the use of protective eye & dust/odour mitigation masks are necessary.**

All subfloors must be clean, flat, dry, and structurally sound. Nails, screws, and grout lines need to be sound, and not > 2 mm below surface. The correct preparation of the subfloor is a major part of a successful installation. **Subfloor must be flat & dry, max. 3mm over 3.0m radius.** Hybrid Floors have an attached acoustic underlay, the use of an additional underlayment is not necessary for residential applications. If additional underlay is used it will impact on the performance of the products patented locking system and will not be covered by warranty. **Underlayment** – The underlay attached is an acoustic foam and does not contain a PE moisture barrier film.

For **residential single dwellings do NOT add an additional underlayment.** Initially you will need to install **200uM builders' plastic over the subfloor as a waterproof membrane** to retard sub-floor moisture. All floating floors move therefore the planks need to move without hindrance, the builder plastic enables the planks to move with less friction across the various types of subfloor material.

Note: Installs for multi-residential may require additional sound dampening to meet strict Body Corporate requirements.

Acoustic installs for multi-residential or commercial installations. If additional sound dampening is required to meet code or body corporate requirements a rigid (dense) acoustic matting can be used to meet the specified acoustic outcome. Rubber or cork/ rubber matting up to > 3mm is suitable in these circumstances. Check with your supplier or acoustic specialist for an appropriate product and installation guidelines.

INSTALLATION OVER – TIMBER STRIP / WOOD PANEL / CONCRETE FLOORS

CAUTION: Some types of fixings, such as common steel nails and certain solvent-based construction adhesives may cause discoloration transferring through the Hybrid flooring, avoid using these materials as discoloration will not be covered by the product warranty.

Max. Raft Sizes ICONIC WPC, 10m, length & 10m, width & ASPIRE & EASI-PLANK, 15m, length & 15m, width

- 1. Subfloor wood-based types- existing Timber Strip Flooring, Plywood, OSB, Particleboard (PB), and Masonite. Substrate must be** structurally sound and secure (no movement). Screw fix any loose or squeaking planks or panels and make sure the floor is level and dry (less than 14% MC for timber or wood-based panels). **Squeaky or noisy sub-floors will remain the same if structural issues are not addressed, a new Hybrid floor will not reduce faults or noise from a problematic sub-floor.**
- 2. All wood-based floor surfaces shall be smooth, permanently dry, clean, and free of all foreign matter such as dust, wax, solvents, paint, grease, oils, and old adhesive residue.** The surface must be rigid, secure, and free of flaking or powdery substances. Sand all edges if joints are not flush on wood based panels such as plywood or particleboard. Level floor, if necessary, 3mm over a 3m radius. Use approx. 5mm Masonite or similar rigid floor panels over timber strip floors if a level surface cannot be achieved.
- 3. If needed add additional fixings to adequately secure an existing substrate.** If possible, examine sub-floor to check underfloor conditions for high moisture or structural defects. For new substrate material fasten and secure according to panel manufacturing guidelines or meet local building regulations. Lightly sand all timber surface areas and importantly joints on particleboard flooring.
- 4. Important requirement for Timber Strip, Particle Board (PB) & OSB sub-floors. Cover with 200uM builder's plastic over entire surface. Securely tape all joints. This method is to reduce friction & jamming making sure the acoustic underlay does not adhere or get jammed to the sub-floor if building movement occurs.**
- 5. Do not use additional underlay** for general residential installations it will compromise the click system and void the warranty. Refer pg. 1 Underlayment & Acoustic installs Multi-Res & Commercial.

www.preferencefloors.com.au

Adelaide (SA)

t +61 8 8262 2774
sa@preferencefloors.com.au

Brisbane (QLD)

t +61 7 3875 1688
ql@preferencefloors.com.au

Melbourne (VIC)

t +61 3 9794 5111
vic@preferencefloors.com.au

Perth (WA)

t +61 8 9471 7785
wa@preferencefloors.com.au

Sydney (NSW)

t +61 2 9738 1188
sales@preferencefloors.com.au

HYBRID FLOORING

INSTALLATION OVER – TIMBER STRIP / WOOD PANEL / CONCRETE FLOORS CONTINUED

6. **For concrete slab installations.** The slab must be dry & level, maximum moisture level target <2.5% in a 24-hr. period. The use of an Impedance meter for determining slab Relative Humidity is generally considered the easiest way to provide random measurements at slab perimeters, doorways, and entries such as garage entry to interior and patio openings. This will quickly assist in determining suitability for installation. Refer AS 1884 for acceptable methods, typically ASTM F2170 is recommended. **Cover slab with 200uM builder's plastic over entire surface. Securely tape all joins. This method is to reduce friction & jamming making sure the acoustic underlay does not adhere or get jammed to the concrete slab if building movement occurs.**
7. Do not install over concrete sub-floors with a history of high moisture conditions. Ph level of concrete should be between 5-9. **The final responsibility for determining if the concrete is dry for installation remains with the floor installer / contractor.**
8. **Hybrid flooring is not suitable for installation directly onto battens or joists.**

Radiant Heat: Warranty covers Hydronic In-slab only - Radiant heat components must have a minimum of 12 mm separation from the product. This is the only type of radiant heat system that is approved. Radiant heat system must be on and operational for at least 2 weeks prior to installation to reduce residual moisture within the concrete. Three (3) days prior to installation lower the temperature to 19°C. After installation gradually increase the temperature in increments of 1°C to avoid overheating. Maximum operating temperature should never exceed **27°C**. Use of an in-floor temperature sensor is recommended to avoid overheating. **In-Screed Heating or Electric Heat Blankets are not covered by our warranty.**

INSTALLATION OVER OTHER EXISTING FLOOR COVERINGS

- Hybrid flooring can be installed over most existing hard surface floor coverings provided that the existing floor surface is structurally sound, clean, flat, and dry. **No loose grout, tiles, or planks. Tile Grout maximum depth <2 mm below tile surface.**
- **Only install over hard set adhesive fixed sheet vinyl floors.** Do not install over Loose Lay, PS Adhesive fixed Vinyl or heavily cushioned Vinyl. Existing Vinyl should not exceed more than 1 layer. To check existing Vinyl flooring simply try to peel or pick up the existing vinyl floor, if it lifts then it is not suitable for installation, it will need removal. Soft underlayment and loose substrates will compromise the product's locking ability as well as diminish its indentation resistance.
- **Do not install Hybrid flooring over any type of carpet.**
- Do not install over sub-floors with a history of high moisture conditions. **MC of concrete slab should be <2.5% & Timber max. 14%**
- Do not use solvents or citrus based cleaning solutions to remove and clean residue or marks from the surface coating.

ANGLE / ANGLE CLICK FLOATING INSTALLATION METHOD

- **Hybrid plank flooring is designed to be installed using the floating method.** Never permanently secure the planks to the subfloor when using the floating installation method. **Do not install cabinets, kitchen island benches or fixed objects on top of the flooring. 8-10mm expansion space is required for perimeters on general installations. Larger installs may require additional expansion capacity, refer note below.** For existing dwellings undercut all door jambs to cater for expansion provisions. Do not fasten wall skirtings, scotia and or transition strips to the planks. The floor must be able to move without restrictions.
- **Wet Areas, Bathroom & Laundry.** These areas must be independently installed from any adjoining floor installation. **The area must be perimeter sealed with a quality mould resistant sealer as per building code requirements for wet areas.**
- **Expansion recommendations: for Hybrid flooring installs greater than raft sizes noted previously** you must allow for room-to-room transmission trims and longitudinal transmission joins to cater for the normal creep and racking that occurs within the overall building structure. **8-10 mm perimeter expansion** is recommended for all installations. **Extra expansion capacity is required for long hallway installs Iconic >10m, Aspire & Easi-Plank >15m that run into large open floor spaces. Always consider transmission breaks to improve the performance of the install. Location planning of trims is vital and should be discussed prior to installation.**

www.preferencefloors.com.au

Adelaide (SA)

t +61 8 8262 2774
sa@preferencefloors.com.au

Brisbane (QLD)

t +61 7 3875 1688
qld@preferencefloors.com.au

Melbourne (VIC)

t +61 3 9794 5111
vic@preferencefloors.com.au

Perth (WA)

t +61 8 9471 7785
wa@preferencefloors.com.au

Sydney (NSW)

t +61 2 9738 1188
sales@preferencefloors.com.au

HYBRID FLOORING

ANGLE / ANGLE CLICK FLOATING INSTALLATION CONTINUED:

1. Prior to installation, it is important to determine the layout of the flooring. Good planning and layout will prevent having narrow plank widths at wall junctures or short length pieces at the end of rows. Minimum plank length install should be no less than 30cm.
2. As with all plank products, install the planks parallel to the longest exterior wall and then determine if the starter row will need to be cut. If the first row of planks does not need to be trimmed in width it will be necessary to cut off the unsupported tongue so that a clean, solid edge shows towards the wall.
3. Installation should start from the left side of the room working to the right when in front of the planks or facing the starting wall.
4. Install the second plank in the row by angling the end tongue into the end groove of the first plank. Be careful not to bend the corner of the plank. Maintain an expansion gap of **8 – 10 mm from the wall**. Start the second row by cutting a plank to the desired length. Keep in mind that the plank **must not be shorter than 30cm** to achieve the best appearance.
5. Install the first plank in the second row by inserting the long side tongue into the groove of the plank in the first row. This is best done with a low angle of the plank. Maintain pressure into the side seam as you rotate the plank to the subfloor. Install the second plank in the second row by inserting the short end tongue into the previously installed plank groove. Align the plank so that the long side tongue tip is positioned just over the groove lip of the plank in the first row. Working from the end seam, at a low angle, insert the long tongue into the groove of the adjoining plank. A small amount of pressure is required to seat the tongue into the groove. You should feel the tongue lock into the groove. **Do not excessively hammer (mallet) end joints as this may result in micro-fractures and end joint failure in-service.**
6. **End joint is a simple angle click to position with slight pressure on the surface to push flat. Make sure end joints remain flush and butted together as install continues, check joint alignment as you work the install.**
7. Work across the length of the room installing planks along the wall in the first row and then aligning the planks in the second row. It is critical to keep these two rows straight and square as they are the “foundation” for the rest of the installation.
8. **Check squareness and straightness regularly, it is easy to repair work after a row or two, it is much harder to rectify problems after the install is finished.**
9. Cut the last plank in the first row and leave an expansion gap of 8-10mm. Planks may be cut with a Utility Knife, Jigsaw, or guillotine accurately. The leftover of this plank may be used to start the third row if it is a minimum 30cm long.
10. Continue installing planks and make sure to achieve a random appearance with end pieces a minimum of 30cm. Check that all planks are fully engaged; if a slight gapping is found, the gap can be tapped together by using a tapping block and a scrap of flooring to cover the tapping block in order to avoid damaging the planks. Do not excessively hammer the joint together, replace plank if joint is damaged.
11. When fitting under door skirtings, if necessary, a flat pull bar may be used to assist in locking the planks.
12. When fitting around obstacles or into irregular spaces, planks can be cut easily and cleanly using a jigsaw with a sharp blade or hole saw. It is often beneficial to make a cardboard template of the area and transfer this pattern to the plank.
13. **Floating floor installations cannot be installed under large objects & cabinetry. Cut in neatly around large objects such as Kitchen Island Benches & Cabinets and attach scotia or mouldings to the fascia not the floor.**
14. Protect all exposed edges of the flooring by installing wall skirting, scotia and or transition strips. Do not secured to the sub floor.
15. **For wet areas such as bathrooms & laundries seal the perimeter of the floor with a mould resistant silicone suitable for wet areas, do not connect wet area installs to an adjoining room installation.**
16. Protect the installed flooring from on-going construction and direct exposure to harmful UV heat and light. This will reduce the incidence of fading and surface damage. **Do not install in proximity to open fires or heating units, plank damage may occur.**

www.preferencefloors.com.au

Adelaide (SA)

t +61 8 8262 2774
sa@preferencefloors.com.au

Brisbane (QLD)

t +61 7 3875 1688
qld@preferencefloors.com.au

Melbourne (VIC)

t +61 3 9794 5111
vic@preferencefloors.com.au

Perth (WA)

t +61 8 9471 7785
wa@preferencefloors.com.au

Sydney (NSW)

t +61 2 9738 1188
sales@preferencefloors.com.au

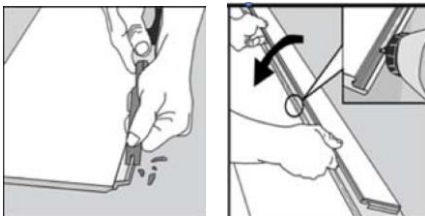
HYBRID FLOORING STAIR NOSING INSTALLATION

Product used for stair nosing & stair treads must be permanently bonded using a full spread trowel adhesive method as per Building Code requirements for stairs & landings. **The product cannot be floated in these circumstances.** Generally, any pre-finished stair nosing will have the acoustic pad removed & if using the flooring planks for tread & riser applications the attached acoustic pad needs to be peeled off to facilitate an effective & permanent bond. **Please use a silicone-based hard flooring adhesive to the underside of the cut planks or nosing to provide a secure and lasting application. Remember, you must remove the acoustic pad before bonding to the stair substrate.**

Method and workmanship are not covered by our product warranty.

REPAIRS IF REQUIRED

1. Hybrid flooring is tough and durable; however, if a plank becomes damaged, it can be replaced. If the damaged plank is damaged along the perimeter of the room, the easiest technique is to disconnect the planks until the damaged plank is removed. Replace the plank and reassemble the planks. If it is impractical to disconnect and reassemble the flooring, the following procedure should be followed:
2. It is recommended to use painters' tape along the sides of the board to be replaced to prevent damage to the adjoining boards.
3. Using a sharp chisel or utility knife cut through the middle of the damaged plank, running the length of the plank.
4. Carefully remove cut pieces from the insert, you can use a utility knife or chisel to remove the pieces from the floor. Clean up any debris.
5. To prepare replacement plank. Cut and remove tongue from the long side and the short end of the plank. This can be accomplished by using a sharp chisel or utility knife.
6. Using a jigsaw / drop saw or utility knife, remove approximately 35 mm of the groove on the long side of the plank from the tongue end.
7. Apply a small bead of Super Glue (Ethyl Cyanoacrylate) Sika Bond F-100 or similar adhesive to the groove of the boards in the floor.



8. Insert replacement plank, locking the long side joint (groove side) into the existing floor. NOTE: The Tongue end of the replacement plank will overlap the existing floor prior to being fully inserted.

9. Using a scrap piece of plank as a tapping device, tap the groove end into place. Insert the blade of a utility knife on the opposite side to lift and adjust the end as it is being tapped into place. Weight the plank until the adhesive sets, minimum, 6-8 hours.

www.preferencefloors.com.au

Adelaide (SA)

t +61 8 8262 2774
sa@preferencefloors.com.au

Brisbane (QLD)

t +61 7 3875 1688
qld@preferencefloors.com.au

Melbourne (VIC)

t +61 3 9794 5111
vic@preferencefloors.com.au

Perth (WA)

t +61 8 9471 7785
wa@preferencefloors.com.au

Sydney (NSW)

t +61 2 9738 1188
sales@preferencefloors.com.au

HYBRID FLOORING

Floor Care & Maintenance

It is important to note that your new floor will require care and maintenance to keep it looking good and performing as intended. If you follow these simple cleaning and maintenance guidelines the floor will provide many years of great service. An expanded floor care document is available on our website for easy reading or downloading.

- Please ensure that an ideal room-climate is maintained whenever possible. Ideal conditions would provide for approximately, 45-60% Air Humidity and 21-25°C room temperatures. This is a comfortable range for indoor climate and provides for optimal health and assists in the overall performance of the floor. Ensure that any air-conditioning or evaporative cooling systems are operated in accordance with the manufacturer's instructions to avoid excessive cooling, heating and moisture ingress remaining within the internal space.
- Daily cleaning should be done with a vacuum cleaner, static mop, or a smooth floor-broom. Any sand or dirt should be removed promptly: they are abrasive and will cause scratches and damage the floor surface coating over time. Please check vacuum head, broom, and other cleaning devices to make sure metal screws or sharp edges are not evident as they will damage the surface.
- Whenever necessary, the floor surface can be cleaned with a well-rung damp-dry mop. Do not use conventional household cleaning solutions and detergents, they are abrasive and will damage the clear surface coating. Never use traditional wax or steel-wool on your Hybrid floor. PH neutral cleaning solutions are required, please observe, and follow manufacturer's instructions. Bona Floor Care or Loba Floor Care products for Vinyl surfaces are a worthwhile investment. **Do not use a Steam Mop under any circumstance.**
- As with all flooring products your new Hybrid floor can be affected by excessive natural and artificial UV light. Your floor may change colour when exposed to excessive UV conditions for long durations. Floor coverings such as rugs and mats should not be placed immediately after laying. The floor should be allowed to stabilise for up to 8 weeks before rugs and mats are positioned. Shifting and alternating rugs over time is also a good idea.
- Window and large door openings require UV protection with sun blinds, drapes or similar. These types of window & door treatments should be in place prior to or immediately after occupancy. Temporary covers are required during the installation phase.
- It is important that you affix felt strips or suitable protection under any furniture-bases, chair-legs, and commonly movable objects. At entry points and for high traffic areas the use of floor mats to remove entry grit and dirt is recommended and will help preserve the floor surface coating. **Do not drag or push heavy items across the surface of the floor.**
- **Roller or castor chairs should not be used directly on the floor surface as grit will build up under the wheels over time and become abrasive.** Protective mats must be placed on the floor to protect the surface coating and to keep the floor looking good.
- In case of plank damage, it is possible to remove damaged planks by pulling up the surrounding area and re-fitting a new plank. Professional advice and assistance from a qualified installer or specialist retailer are recommended prior to any rectification.

Note: only In-slab hydronic heating will be considered under warranty provisions. All other heating methods are excluded by our warranty. Carefully review the heating systems guidelines for installation and operational procedures before installing your Hybrid floor. Do not install Hybrid flooring in proximity to open fires or heating units, damage may occur.

Disclaimer: Preference Floors has used its reasonable endeavours to ensure the accuracy and reliability of the information contained herein and, to the extent permitted by law, will not be liable for any inaccuracies, omissions, or errors in this information nor for any actions taken in reliance on this information. Products must be installed in accordance with relevant installation recommendations and industry best practices. © Homemirus Pty Ltd trading as Preference Floors. Head Office 02 97381188.

www.preferencefloors.com.au

Adelaide (SA)

t +61 8 8262 2774
sa@preferencefloors.com.au

Brisbane (QLD)

t +61 7 3875 1688
qld@preferencefloors.com.au

Melbourne (VIC)

t +61 3 9794 5111
vic@preferencefloors.com.au

Perth (WA)

t +61 8 9471 7785
wa@preferencefloors.com.au

Sydney (NSW)

t +61 2 9738 1188
sales@preferencefloors.com.au